

TEPERMAN

GROUP OF COMPANIES

Our diversity and knowledge as well as the equipment, which is owned by us, ensure that we are able to provide a wide range of services for our clients in all capacities. Our personnel are fully experienced and knowledgeable in their fields and able to respond to the most difficult of client's needs.

We are in good standing with the WSIB and carry over 5 million of liability insurance and are bondable for both demolition and abatement.

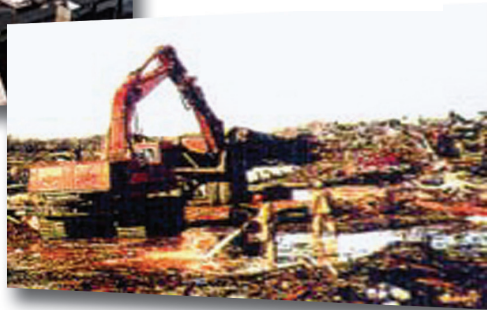
Should you have any further questions, queries or require information please contact us directly so we may assist you in whichever capacity.

Demolition

Our demolition work has always been done with the utmost care and diligence from experience gained over the years by five generations of the Teperman people. This continuous commitment to excellence has led to respect and admiration of our client base to fulfill their needs and commitments in the demolition industry in Canada. Through the years this has led to the association of the name Teperman with demolition.

Waste Management

Our waste management division is a full service, licensed transportation company that provides service to companies that require haulage of waste and the movement of hazardous materials.



Scrap Metal

Teperman has the resources to dispose of all scrap and unusable equipment resulting from your demolition job, saving you time and inconvenience. Planking, steel beams, fixtures, used building materials available at all our salvage yards. We also specialize in liquidation of industrial factories, hotels and office buildings.

Abatement/Site Remediation

Asbestos, PCB's, Lead, Mould, Oil Contaminated Soil, Metals - Soils - Removal and Remediation

Here are some of the many companies and communities who have used Teperman services with satisfaction.

Aquicon Construction
Bank of Montreal
Bank of Nova Scotia
Bell Canada
Belmont Construction Co. Ltd.
Board of Education - Ottawa
Board of Education - Etobicoke
Bruce Brown Associates
Cadillac Fairview Development Corp. Ltd.
Cambridge Shopping Centre
Canada Packers
Canadian industries Limited
Canadian Tire Corporation
Canadian Westinghouse
Catholic District School Board
Chrysler Canada
C.I.B.C
City of Hamilton
City of Toronto

City of Edmonton
City of Kitchener
City of London
City of Montreal
City of Calgary
City of Ottawa
D. Commissioning Consulting Services
Daniels Corporation
Dalton Engineering
Dineen Construction
Dominion Life Assurance
Denison Mines
Defence Construction Canada
Dofasco
Eastern Construction
Eaton - Yale Properties
Famous Players Canadian Corporation Limited
Fiberglass Canada Ltd.

Ford Motor Company
General Motors
Goodyear Tire & Rubber Company of Canada Ltd.
Guarantee Trust Company
Hamilton East Kiwanis
Harbridge & Cross Ltd.
Horizon Development and Management Ltd.
Hotel London
Imperial Oil Limited
Inco Limited
Ivaco
Kitchener City Hall
Kodiak Environmental
Kodak Canada Inc.
Ministry of Government Services
Mutual Life Assurance Co.
National Paper

National Capital Commission
Olympia and York Developments Ltd.
Ontario Hydro
P.C.L. Constructors
Ralston - Purina
Royal Bank of Canada
Seagram Distilleries
Tamblyn - Pritchard & Johnston Construction Ltd.
The Meridian Building Group Ltd.
Toronto Dominion Bank
Trizec Equities Ltd.
Trow Associates Inc.
University of Guelph
University of Waterloo
Victoria Hospital - London
Xerox of Canada



Toronto - Head Office 280 Commissioner Street, Toronto, Ontario M4M 1A4
Phone: 1 (877) TEPERMAN / (416) 463-6344 Fax: (416) 463-3633 Email: info@teperman.ca

www.teperman.ca

